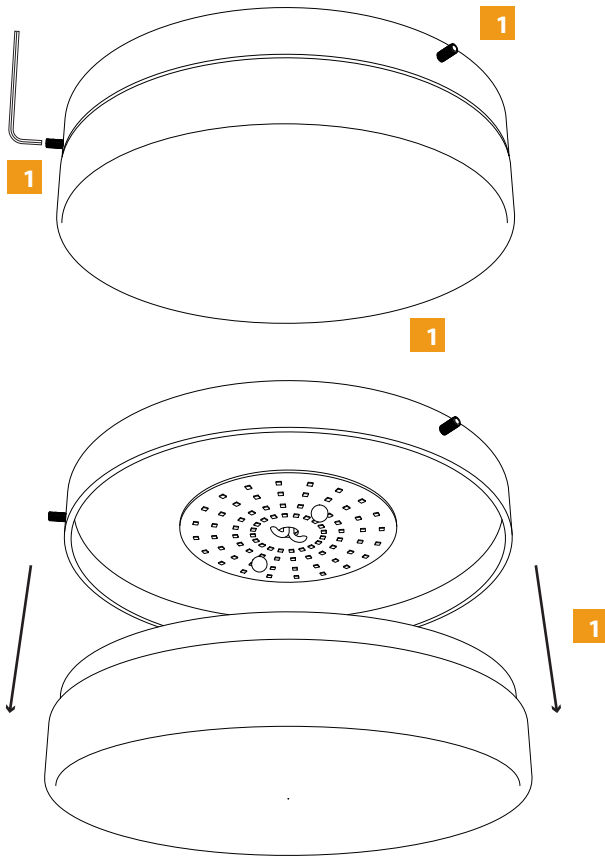
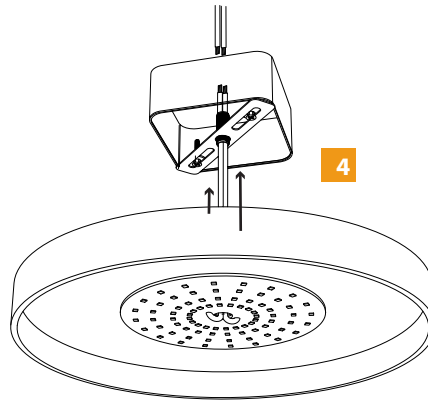


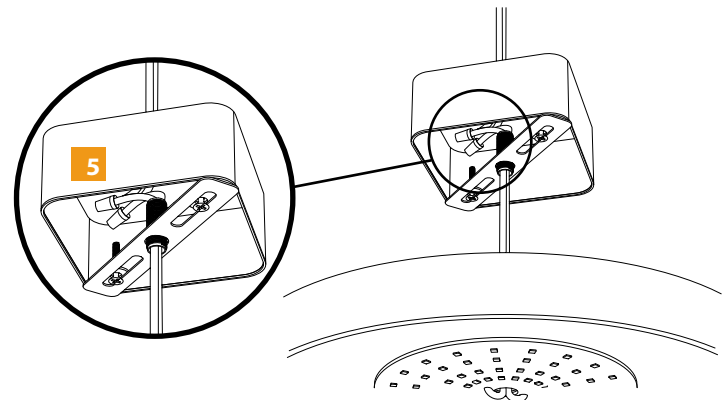
- 1** Loosen all set screws (3) and remove crystal from face.



- 4** Feed wires through 1/8IP nipple that is mounted to the crossbar and wire the fixture.

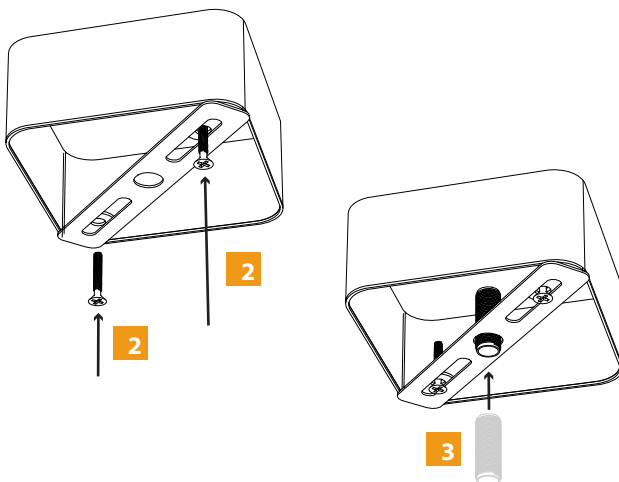


- 5** Connect wires from line voltage with wires from fixture.



- 2** Mount crossbar in APKIT to the junction box.

- 3** Thread the 1/8IP nipple into the crossbar that is mounted to the ceiling.



- 6** Install the backplate of the fixture to the nipple with 1/8IP lock washer and 1/8IP nut.

- 7** Place the glass back on the fixture and support while retightening set screws. Turn the Power on.

